



Society of Critical Care Medicine - Texas Chapter

Critical Care Corner

March 2016 - Volume 6, Issue 1

Educational Programs

Houston

- April 20, 2016

Dallas/Fort worth

- April 26, 2016

San Antonio

- May 2016

El Paso

- TBD

*For more details, go to
the Chapter Events page at
sccmtexaschapter.org*

Inside this issue:

President's Corner	1
Membership Committee	2
Communications Committee	3
Programs Committee	3
Symposium Committee	4
Awards Committee	5



sccmtexaschapter.org



SCCM Texas Chapter



texaschapter.sccm@gmail.com

Mailing Address:
TSCCM, 2429 Bissonnet
Suite 461, Houston, TX, 77005

President's Corner

Michael Sirimatueros, PharmD, BCNSP

Hello Texas Chapter members! Another year has flown by and we are well underway into 2016. As many of you are aware, we transitioned Executive Committee officers as of the end of February. With that being said, I wanted to formally introduce myself for those of you whom I have never met.

I am a Clinical Pharmacist Specialist at the Houston Methodist Hospital (HMH) in the Texas Medical Center and have been working in critical care for the past 9 years. I also serve as the Director of the PGY2 Critical Care Pharmacy Residency Program at HMH. I have been a member of SCCM since 2007 and the Texas Chapter since 2008 when it was re-founded. I was elected onto the SCCM Texas Chapter Board of Directors (2010-2012) and subsequently was elected to the Texas Chapter Executive Committee in which I served as Treasurer (2013), Secretary (2014), President-Elect (2015), and currently serve as the President. I have been extensively involved in many chapter committees and activities including Programs, Membership, Research, and the annual chapter Symposium. For the symposium, I served as the continuing education coordinator for 7 disciplines for the past 3 years as well as served as the Symposium Committee Chair in 2015. I have had the pleasure of working with many chapter members from every critical care discipline from around Texas in my leadership roles in the chapter.

One of the biggest benefits of being a part of SCCM and the Texas Chapter are the members. I have thoroughly enjoyed getting to know and working hand-in-hand with such passionate and dedicated professionals in the area of critical care. Involvement in SCCM and the Texas Chapter allows opportunities to network with colleagues within your region, state and across the country. Membership provides a wealth of education and continuing education opportunities through local programming, annual symposiums, as well as at the national Congress meeting. The Texas Chapter has a large variety of committees to become involved with including the Awards, Communications, Membership, Nominations, Programs, Research, and Symposium Committees. I highly encourage you to take advantage of your membership and get involved! There is a committee and/or activity that can meet every member's professional and/or personal needs as well as can provide great leadership opportunities. The Texas Chapter has some of the best members within SCCM who tirelessly devote their time and energy to making our chapter functional and run seamlessly. I want to thank all of them for their devotion to our organization.

My goals for this year are to continue to strengthen our committees and leadership and to ensure the focus is on you as our chapter members. Being the largest chapter within SCCM, the Texas Chapter faces unique obstacles. Due to this, I decided to focus 2016 around the following themes: **Strengthen, Engage/Re-Engage, Innovate and Streamline**. I will focus on strengthening our committees as well as ensure growth and retention of members. I will encourage active involvement of our chapter leadership and members and engage all members, both new and recurring, in every region across Texas. I will place emphasis on increasing innovation in how we manage our chapter operations as well as the programming we offer our members. And finally, I will work with our current chapter leadership to streamline processes to ensure we are setting up our chapter leaders for success in the future.

I would love to hear feedback from you regarding your experience as a Texas Chapter member and how to make your experience more rewarding. Please email me (president@sccmtexaschapter.org) with any comments, suggestions, or concerns. I look forward to serving as your Texas Chapter President in 2016.

Michael Sirimatueros, PharmD, BCNSP
President, SCCM Texas Chapter



Membership Committee Update

Maggie Ma, PharmD, BCPS

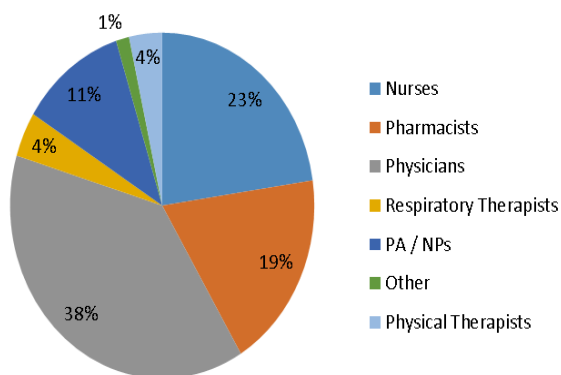
To wrap up 2015, we would like to acknowledge several committee members who have dedicated over 2 years of service to the membership committee. A big thank you to **Kay Harris, RN**, **Rebeca Halfon, PharmD**, and **Vy Pham, PharmD** for your dedication and hard work!

We would also like to recognize several outstanding members for their recruitment efforts. Thank you to **Andro Herrera-Mendoza, RRT** for recruiting 7 members, **Patrick Cullinan, DO** for recruiting 4 members, and **Susan McLean, MD** for recruiting 3 members in 2015.

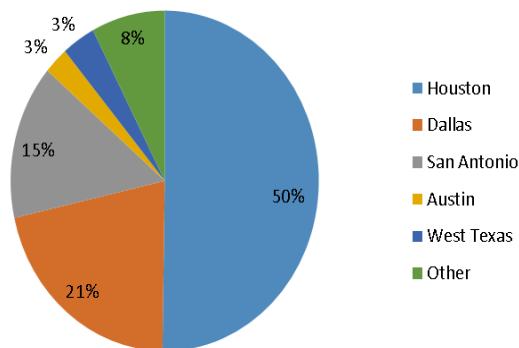
As a reminder, our referral program has resumed on January 1st, 2016 and will end on December 31st, 2016. Each member who refers 3 new members to the chapter will receive a free 1-year membership (for members who are not national SCCM members, you must refer 4 new members for a free 1-year membership). If you're not currently a national SCCM member, it is easy to join. Visit www.sccm.org to sign up. To refer a new member, please have them fill out an application form on our website at www.sccmtexaschapter.org under the "Membership" tab. This will directly link them to PayPal where they can pay for their dues. Alternatively, new members can sign up for both national and Texas membership through the national SCCM website. In this case, please have the member email the membership chair at membership@sccmtexaschapter.org for notification of the referral.

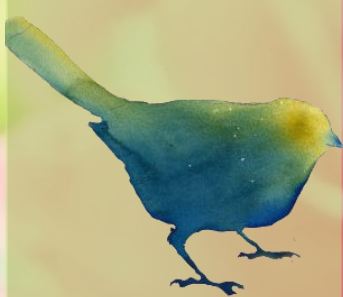
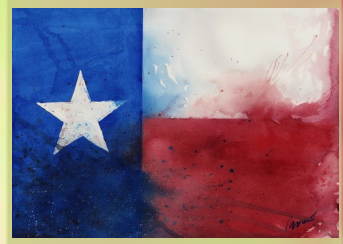
As of today, the Texas chapter currently has over 420 members! Our membership composition, broken down by city and discipline are depicted in the graphs below. Remember, our chapter is open to all healthcare disciplines who are involved in the care of critically ill patients. We encourage you to reach out to your colleagues and invite them to come see what our chapter is about! For questions about membership or to get involved in the membership committee, please email membership@sccmtexaschapter.org.

Membership by Discipline



Membership by City





Communications Committee Update

Brian Burleson, PharmD, BCPS

The Communications Committee is responsible for the dissemination of information between our chapter and its members, and this is primarily done electronically via our chapter website, email communication and social media with our Facebook account. You may have noticed we have a new website for the Society of Critical Care Medicine Texas Chapter (sccmtexaschapter.org) – check it out if you have not had a chance to yet. Hopefully you will like the new professional layout and ease of finding the information you need. I would like to expand our use of social media and communication of SCCM Texas Chapter Events – stay tuned for more information.

We value our volunteers that help keep TSCCM communications running smoothly: Matthew Wanat (Website), Don Foronda (Social Media), Lan Bui (Newsletter), and Jessica George (Houston Area Coordinator). Matthew Wanat will be transitioning the website responsibilities over to a new (but old) member, Brandon Sterling. Brandon served on the Communications Committee several years ago and we are glad he is back!

If you are in San Antonio, Dallas or El Paso and are interested in volunteering to help out with the Communications Committee as an Area Coordinator please email communications@sccmtexaschapter.org and let us know. Look for our emails (texaschapter.sccm@gmail.com) or at the website for meeting announcements or general organizational communications.

Programs Committee Update

Anne Rain Tanner, PharmD, BCPS

We are off to a great year with our chapter meetings! Houston started off the year with a very interesting lecture on “An Innovative Approach to Pulmonary Embolism” presented by Dr. Anas Safadi. San Antonio and El Paso sponsored meetings prior to Congress as well. Drs. Ramesh Grandhi and Jeremiah Johnson discussed endovascular interventions in Acute Ischemic Stroke in San Antonio. El Paso welcomed the new year with a lecture by Dr. Kevin Sandberg entitled “The role of the psychiatrist in the management of critical care medicine patients”. In Dallas, Dr. Doug Hardy presented on “Treatment options for adult patients with HABP/VABP”. Finally, our group in Houston just met to review updates from the Critical Care Congress held in Orlando this year to discuss the chapter’s accomplishments over the past year, and to present the chapter’s Alan I. Fields award winners. Congratulations to recipients Angela Chun and Joshua Swan!

Be sure to check out our website and your email inbox to reserve your spot at an upcoming chapter meeting! Meetings are planned for April 20th in Houston and in both San Antonio and Houston in May. We will be updating information on the website as it becomes available and look forward to seeing you there!

Just as a friendly reminder, please ensure that you RSVP for meetings and cancel your reservation if you are unable to attend. This ensures that our sponsors have a good estimate of the expected turnout and continue to provide support for our chapter.

The Program Committee welcomes any members interested in planning future chapter meetings and events! If you are interested in becoming more involved in the Program Committee, please contact Anne Rain Tanner, PharmD, at programs@sccmtexaschapter.org.



Symposium Committee Update

Jennifer Gass, PharmD, BCPS

Looking for a way to get involved in the SCCM TX Chapter and share your excitement and passion for critical care? Please consider joining the Symposium Committee.

Although 2016 will mark our 5th Annual Symposium, we have changed the structure from an ad-hoc committee to an official Texas Chapter committee with a Chair and year-long committee members. We need enthusiastic people with great ideas to join the Symposium Committee and help get our process started for 2016. There are many ways to support and volunteer including in the following capacities:

- Symposium secretary
- Venue coordination
- Program booklet arrangement
- Registration coordination
- Topic and speaker identification
- Continuing education coordinators for each discipline
- Volunteers coordinator
- Poster moderators
- Vendor coordinators
- Regional symposium promoters
- Housing and activities coordinators

With this diversity of activities, there are tasks and ways to participate for everyone. We also need representatives from across Texas and to make sure all disciplines and regions have a voice and can provide input. This is a symposium by Texas Chapter members and for Texas Chapter members.

We are planning to bring the symposium back to the Houston area in the Fall 2016 (~September/October). The date, location and theme will be finalized in the coming weeks. Please contact the new Symposium Chair, Jennifer Gass (symposium@sccmtexaschapter.org), if you have any questions or are interested in being involved on the committee. Your name can then be placed on our Symposium Committee list serve which will allow you to be engaged with all activities of the committee including meeting dates, call for volunteers, etc. Symposium Committee meetings will begin in March/April 2016. We look forward to working with you!



Award Committee Update

Mary Lou Warren, DNP, RN, CNS-CC, FCCM

2015 SCCM – Texas Chapter Annual Awards

The chapter awards program was developed to acknowledge chapter leaders and members for accomplishments and contributions to the chapter and to critically ill and injured patients over the past year. This year, we had nine members who were honored as recipients and were honored at area meetings in March.

Outstanding Member Awards are presented to one member from each region of Texas. This year we had four recipients:

- Outstanding Chapter Member – Houston Area: **Anne Rain Tanner**
- Outstanding Chapter Member – Dallas Area: **Lyndsay Sheperd**
- Outstanding Chapter Member – San Antonio Area: **Rebecca Attridge** and **Casey Drawert** (awarded posthumously)

Three awards are available to recognize members for their contributions to critically ill and injured patients in the areas of Education, Clinical Practice, and Research/QI. This year we had two recipients:

- Excellence in Service – Education: **Matthew Wanat**
- Excellence in Service – Clinical Practice: **Christiane Perme**

Each year the Executive Committee recognizes one member for their contributions as a Board of Directors member, Committee Chair, or Committee Co-Chair. This year, the Distinguished Leadership Award recipient was **Maggie Ma**, Membership Committee Chair.

Additionally, the chapter recognized **Brian Dee** for his dedicated service as Program Committee Chair from 2008 through 2015 and to Iqbal Ratnani for his service as Treasurer from 2013 through 2015.

The nomination process for annual awards being in October of every year. We encourage all of our members to nominate their peers who are chapter members and acknowledge them for their service and contributions to the chapter as well as to critically ill and injured patients.

Have an idea for the newsletter? Are you doing something unique in your ICU or want to share the results of your research? Email newsletter@sccmtexaschapter.org to have your work included in the next newsletter. We want to hear from you! :)

The Critical Care Corner Newsletter is the official quarterly newsletter of the Society of Critical Care Medicine–Texas Chapter, published online at www.sccmtexaschapter.org.

Editors: Brian Burleson, PharmD, BCPS; Lan Bui, PharmD; Matthew Wanat, PharmD, BCPS.