



Society of Critical Care Medicine - Texas Chapter

Critical Care Corner

June 2015 - Volume 5, Issue 2

Educational Programs

Houston

- 07/15/2015

Dallas/Fort worth

- TBA

San Antonio

- TBA

For more details, go to the **Chapter Events** page at sccmtexaschapter.org

Inside this issue:

President's Corner	1
Committee Update	2,3
RSVP Requests	4
ICU Trivia	5
Save the Date	6-7

sccmtexaschapter.org



SCCM Texas Chapter



texaschapter.sccm@gmail.com



Mailing Address:
TSCCM, 2429 Bissonnet
Suite 461, Houston, TX, 77005

President's Corner

Wendi Jones, MSN, ACNP-BC

Greetings Texas Chapter Members! How did it get to be June already? I hope you are all having a wonderful, safe and dry year!

I am happy to report that the Texas Chapter continues to grow, remaining the largest chapter in National SCCM's Chapters Alliance. We have approximately 460 active chapter members. Our success is a direct result of the enthusiasm and dedication of members like you!

We began the year 2015 with three major goals and I would like to provide you with updates. It is important all of the Texas Chapter members remain aware of the direction of the chapter. We are, after all, your leadership and wish to take the chapter in a direction we can all agree is important. Along those lines, we are striving to update our technology. This is the first goal I set forth this year. We are in the process of working with a company to update our website. In addition, we will be trialing video-conferencing at our next Board of Directors meeting. This is important for several reasons. As we continue to grow and have members throughout the state of Texas become members of the Board of Directors and the Executive Council, this will allow better communication. Additionally, we can move forward in the coming years to web casts and increased educational opportunities.

Our second goal is to move forward with the TSCCM 4th Annual Symposium in San Antonio this year and we are very excited to announce the dates of October 16th -17th, 2015. It will be held at Trinity University. We have exciting topics and speakers lined up so please see the end of this newsletter for a brochure with additional details!

The third goal is to sustain our accomplishments and continue to move forward with building our infrastructure. The Chapter continues to grow in many ways but we can only sustain growth with involved members. We are a very large chapter and, despite the many members who remain active, we can always use the additional help. Do you have an interest in research? We are in need of additional members for our research committee. Working with the research committee would allow you to make not only a difference in the Texas Chapter, but also in your patient's lives. Texas is an amazing state and we have the ability to produce quality research. Join us won't you?

In closing, I would like to thank the leadership of the Texas Chapter and, of course, the 460+ members. I encourage everyone to take advantage of their membership by utilizing the many benefits offered by the Chapter. Have a safe and happy summer. See you at the 4th Annual Symposium in San Antonio!

Best regards,

Wendi Jones

2015 President, Society of Critical Care Medicine



Membership Committee Update

Maggie Ma, PharmD, BCPS

In conjunction with our upcoming annual symposium, we wanted to also announce the start of our **FLASH MEMBERSHIP DRIVE**. Starting on July 1st, members who refer any 5 individuals by October 9th will receive a free 2-day registration to our 4th Annual Symposium. In addition, you will also receive a free 1-year membership to the Texas SCCM chapter. Membership applications can be completed on our website (www.sccmtexaschapter.org) and dues can also be paid on our website with any major credit card. Texas chapter dues can also be paid through signing up with national SCCM at www.sccm.org. We highly encourage all members to join national SCCM as well! For questions about membership or to get involved in the membership committee, please email membership@sccmtexaschapter.org.

Remember, our chapter is open to all healthcare disciplines who are involved in the care of critically ill patients. We encourage you to reach out to your colleagues and invite them to come see what our chapter is about!

Communications Committee Update

Brian Burleson, PharmD, BCPS

The communications committee is responsible for the dissemination of information between our chapter and its members, and this is primarily done electronically via our chapter website, email communication and social media with our Facebook account. During the last several months, changes to the communications have left us with 6 members. These members are: Matthew Wanat (Website), Don Foronda (Social Media), Lan Bui (Newsletter), Shubhangi Sharma (Dallas Area Coordinator), Jennifer George (Houston Area Coordinator), and Brian Burleson (Chair). Look for our emails (texaschapter.sccm@gmail.com) or at the website for meeting announcements or general organizational communications.



Awards Committee Update

Mary-Lou Warren, DNP, RN, CNS-CC

The Awards Committee is looking forward to the 2015 awards process and encourage members to recognize their peers through the program. The committee is also actively looking for members and a new Chair. Please contact Mary-Lou if you are interested at awards@sccmtexaschapter.org.

Program Committee Update

Amaris Fuentes, PharmD, BCPS.

The second quarter brought some very interesting presentations to our chapter meetings throughout the state! Members in our Houston and San Antonio areas welcomed Dr. Brandy McKelvy and Dr. Andrew Shorr to discuss an "Introduction to Ceftolozane/Tazobactam" in May. Our members in Dallas enjoyed a presentation from Dr. Edward Dominguez on Televancin in June. Finally, our Houston members welcomed Dr. Hany Samir to present "Management of Blood Pressure Control in the Acute Care Setting" in June. We thank our presenters and sponsors for such quality programming!

The next Houston meeting is currently planned for July 15th. Be sure to check out the Texas SCCM website for more information on upcoming meetings in other cities. We will be updating information as it becomes available and look forward to seeing you there! If you are interested in more information regarding the Program Committee, please email Brian Dee, PharmD, at programs@sccmtexaschapter.org.

Calling all Dallas members! We are looking for one or two dedicated and enthusiastic individuals to transition into the Program Committee Dallas Coordinator position by the end of the year. It is a fun and easy way to build your leadership and networking skills. Main duties include coordinating with pharmaceutical and medical device representatives to sponsor monthly to bi-monthly chapter meetings. If you are interested in finding out more about this exciting opportunity, please contact Brian Dee, PharmD, at programs@sccmtexaschapter.org.



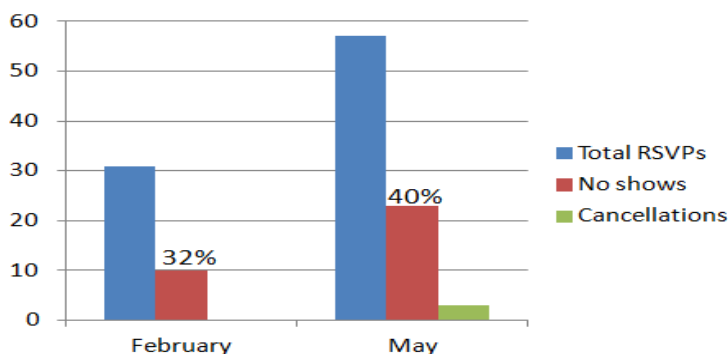
Can't make the meeting? Don't forget to cancel your RSVP!

We would like to provide a friendly reminder regarding the RSVP process for chapter meetings. While our "no-show" percentage (i.e. those who submit an RSVP but do not attend the meeting) has historically been 20%, we have seen an increase upwards of 40 to 50% over the past 12 months in all three cities. Please be aware that we collect RSVPs in order to provide our meeting sponsors with an expected turnout. Failure to meet that expected turnout can adversely affect our sponsors' budget and ability to support future meetings. If you RSVP for a meeting and later realize you will be unable to attend, please cancel the reservation through our web-site. Doing so allows our members on a waiting list to attend, as well as helps us provide the sponsor with an accurate expected turnout. Thank you!

Texas SCCM Chapter Meeting No Show Percentage - January to May of 2015

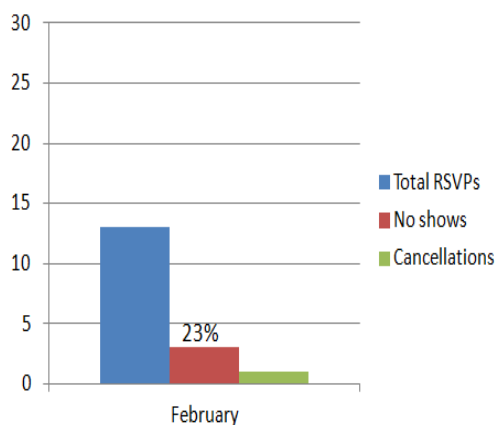
Houston

Total RSVPs vs. No shows



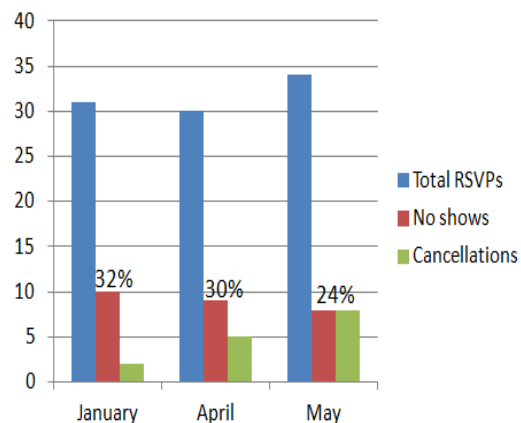
Dallas

Total RSVPs vs. No shows



San Antonio

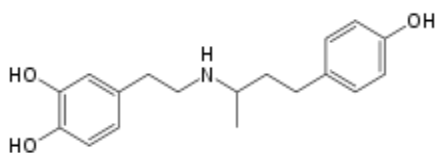
Total RSVPs vs. No shows



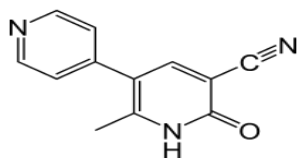
TRIVIA : ICU Vasopressors & Inotropes

Let's see how well you know vasopressors and inotropes commonly used in the ICU. Match each medication with the most appropriate description. Need some help? Ask your local ICU pharmacist!

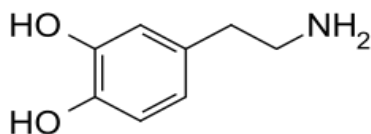
1. DOBUTamine



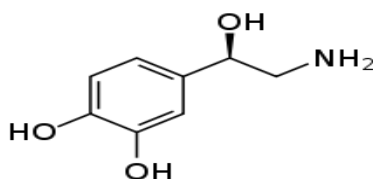
2. Milrinone



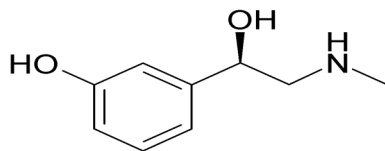
3. DOPamine



4. Norepinephrine



5. Phenylephrine



A. Inotropic agent that increases contractility via PDE-3 receptors. This medication causes some peripheral vasodilation and may not be the best choice in hypotensive patients.

B. Purely synthetic vasopressor with A1 receptor agonist activity; It will increase blood pressure, but has no direct effect on heart rate.

C. First-line vasopressor agent in patients with sepsis shock. It will increase blood pressure and heart rate.

D. Inotropic agent with primarily B₁ agonistic effects. You may see tachyphylaxis with prolonged use and an increased risk of ventricular ectopy.

E. A vasopressor and some inotropic agent. The receptors that it stimulates and resulting effects are largely dose dependent.

The Critical Care Corner Newsletter is the official quarterly newsletter of the Society of Critical Care Medicine—Texas Chapter. It is published online at www.sccmtexaschapter.org.

Editors: Brian Burleson, PharmD, BCPS; Matthew Wanat, PharmD, BCPS; Lan Bui, PharmD

Have an idea for the newsletter? Are you doing something unique in your ICU or want to share the results of your research? Email newsletter@sccmtexaschapter.org to have your work included in the next newsletter.

Trivia Key: 1D, 2A, 3E, 4C, 5B



Texas SCCM 2015 Symposium

Save the Date

October 16-17, 2015

Trinity University, San Antonio, TX



Hot Topics In Critical Care 2015 Symposium

Target Audience: Multidisciplinary

- ✓ Physicians
- ✓ Nurses
- ✓ Advanced Practice Nurses
- ✓ Pharmacists
- ✓ Respiratory Therapists
- ✓ Registered Dieticians
- ✓ Physical & Occupational Therapists

This activity is eligible for CE credit. The final activity announcement will contain specific details regarding CEUs for each discipline.

DAY ONE

Registration / Breakfast / Exhibit Hall	7:00-7:45
President Welcome Address	7:45-8:00
Keynote Speaker -Patrick Cullinan, DO	8:00-8:30
Session One – Infectious Diseases	
Ebola	8:30-9:00
Emerging & Re-emerging Diseases	9:00-9:30
ID Updates: New Antibiotics & Culture Tests	9:30-10:00
Break / Snacks / Exhibit Hall	10:10-10:30
Session Two - Resuscitation	
Assessing Fluid Resuscitation with Ultrasound	10:30-11:00
Sepsis Management: Where are we at?	11:05-11:30
Hypothermia: Post –Resuscitation	11:30-12:00
Lunch / Exhibit Hall	12:10-1:45
Poster Session with Professor Walk Rounds	12:45-1:45
Session Three - Nursing	
Clinical Nurse Role in Quality Initiatives	1:45-2:25
Changing Role of the Nurse	2:25-2:45
Session Four - Nutrition	
Immunonutrition & Pre-op Carb Loading	2:55-3:25
Impact of Nutritional Product Shortages	3:25-3:55
Wrap-up / Announcements	4:05-4:15

DAY TWO

Registration / Breakfast / Exhibit Hall 7:00-7:45

Session Five –Healthcare System Transformation

Evidence-Based Medicine Adoption 7:45-8:15

Large System Transformation 8:15-8:45

Session Six – Palliative Care in the ICU

The IPAL – ICU Project 8:55-9:25

The Care and Communication Bundle 9:25-9:55

Integration of Palliative Care in the ICU 9:55-10:25

Break / Snacks / Exhibit Hall 10:35-11:00

Session Seven - Respiratory

Impact of Asynchrony on Patient Outcomes 11:00-11:30

Current Concepts in ARDS Management 11:30-12:00

Difficult Airway Updates 2015 12:00-12:30

Lunch / Exhibit Hall 12:40-1:45

Session Eight – Early Mobilization

Mobilizing the Critically Ill 1:45-2:15

Session Nine – Critical Care by Air & Ground

EMS to ICU 2:20-2:50

Life Flight 2:50-3:20

Mobile Stroke Unit 3:20-3:50

Closing Remarks / Announcements 4:00-4:15



San Antonio River Walk

Hotel

Hyatt Place San Antonio Airport/Quarry Market

7615 Jones Maltsberger Road
San Antonio, TX 78216
(210) 930-2333

Double/Single \$109.00/nightly
Discounted rate is valid until 9/16/15

Courtesy Shuttle from hotel to venue and attractions within a 3 mile radius

Local Attractions

- ✓ Six Flags Fiesta Texas Fright Fest
- ✓ The Alamo
- ✓ San Antonio River Walk
- ✓ SeaWorld's Howl-O-Scream
- ✓ Tower of Americas
- ✓ San Antonio Mission's National Historical Park
- ✓ Alamo Quarry Market